

Prospect Point

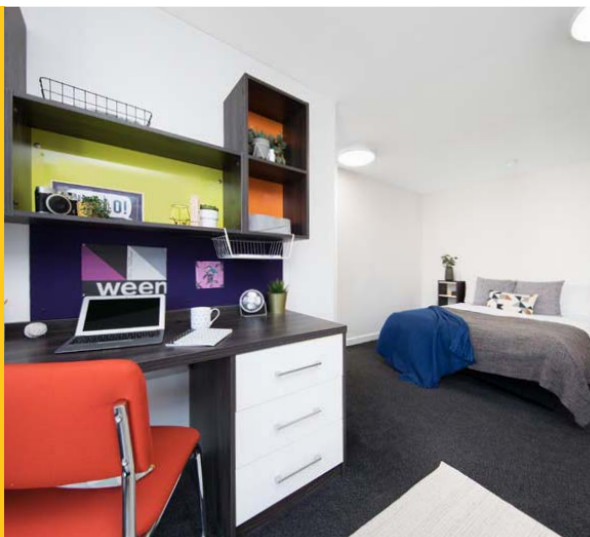
Liverpool

 Eurocentres

 Bayswater

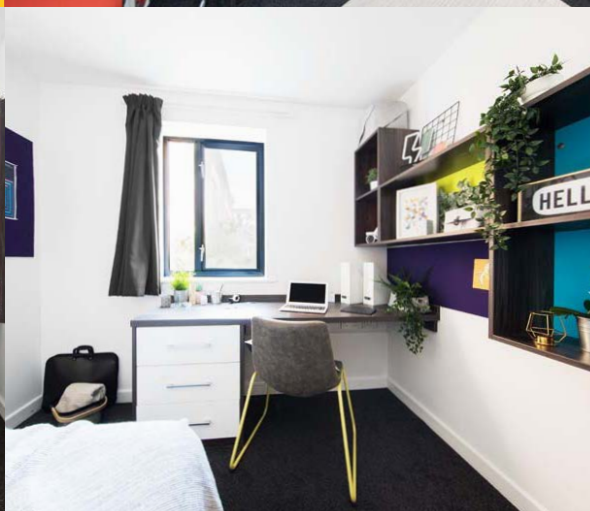
With 635 students living there, Prospect Point feels like one big community.

Want some time to relax outside your flat? The common areas in Prospect Point feature comfortable seating, study spaces, a TV and board games, so it's easy to socialise with your neighbours when you want to.



The Area:

The city centre is but a 15-minute walk with plenty of local shops and amenities close by.



Why choose

Prospect Point

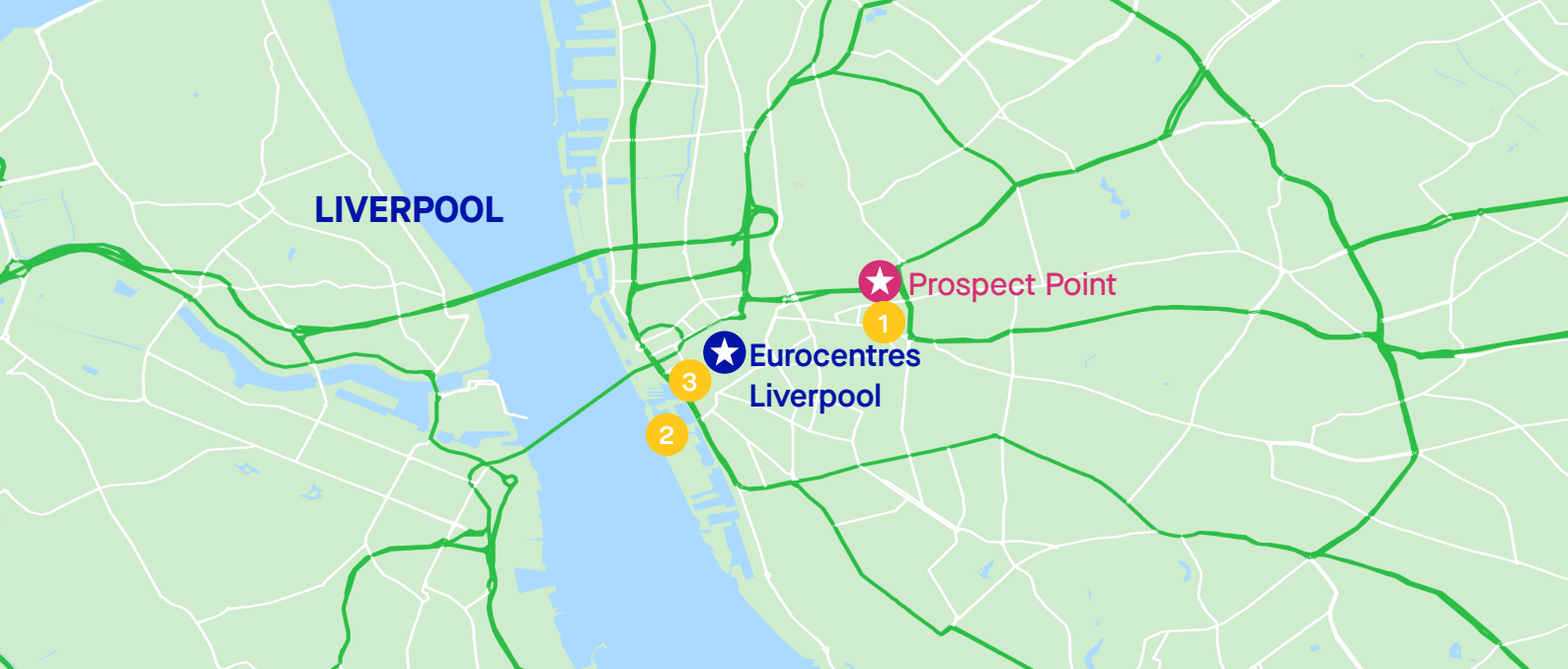
Quieter than other student residences

Newly refurbished

Active social areas and activities

Key facts:

Room Types	Single or studio (1 or 2 occupants)	Bathroom	En-suite
Board	Self-catering	Bed type	Singe/double
Available	Yes	Minimum age	18+
Kitchen facilities	Oven, toaster, kettle and microwave	Check In	After 15:00
Nearest station to residence	Liverpool Lime Street Station	Check Out	Before 11:00
Travel time to school	20 minutes on foot		
Arrival & departure	Arriva:l Sunday. Departure: Saturday		
Security/ Reception	Yes		
Internet	Free wifi		
Cleaning	No		
Towel	Yes		
Laundry	Pay per use		
Residence facilities	Common room, games room, 24 hour security		
Room furnishing	Bed, table, chair, wardrobe		
Deposit	No		



Getting Around

To the school:

???

Travel cards:

Not needed unless traveling outside the city centre

Transfer available on booking: Yes

From the airport by public transport:

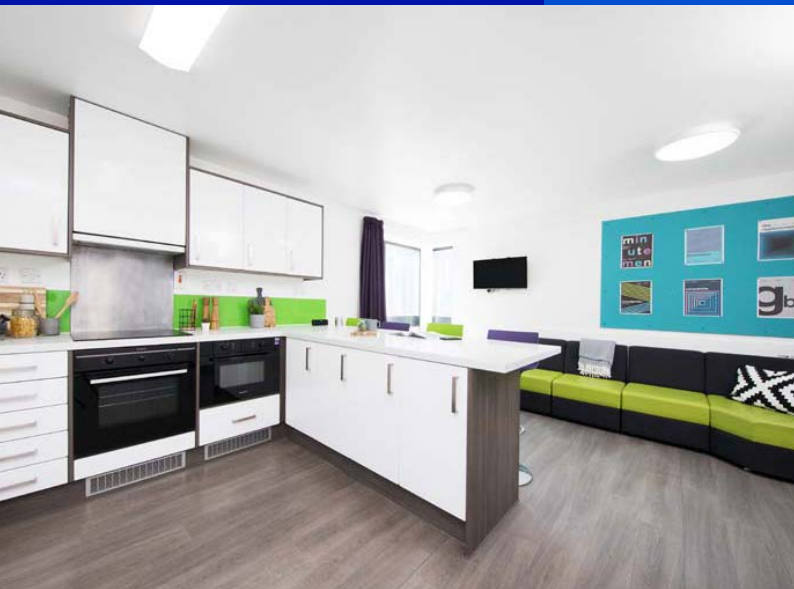
Take the bus to Queens Square bus station and walk 15 minutes to the residence

Liverpool Travel Information:

www.merseytravel.gov.uk

Travel times:

★ Eurocentres Liverpool	20 min	🚶
1 Liverpool Lime Street	13 mins	🚶
2 The Beatles Story	30 mins	🚶
3 Cavern Club	25 mins	🚶



www.eurocentres.com
www.bayswater.ac

Residence address

60 Moira Street, Liverpool L6 1BA, UK

Residence emergency number

+44 151 261 1809

School phone number during office hours

+44 151 707 8905

Contact us

bookings@bayswater.ac

Cancellation policy

As per our Standard Terms & Conditions

www.bayswater.ac/terms